

## FUTURE STRUCTURES

### INTERNAL RELATIONS

- ◆ DAVID FERGUSON
  - ◆ HEAD OF EXECUTIVE SUPPORT
  - ◆ DIRECTOR, CENTRAL SECRETARIAT

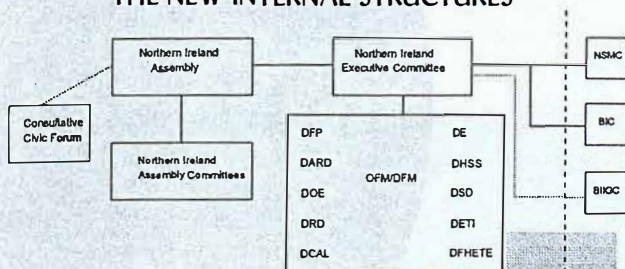
## FUTURE STRUCTURES

### PROGRAMME OUTLINE

- ▶ New Internal Structures
- ▶ The Executive Committee
  - its nature
  - its role
  - "joined- up" Government
- ▶ The Assembly
- ▶ The Consultative Civic Forum

## FUTURE STRUCTURES

### THE NEW INTERNAL STRUCTURES





## FUTURE STRUCTURES

### " JOINED-UP" GOVERNMENT

- ▶ The Economic Policy Unit
- ▶ Liaison with the NIO
- ▶ Liaison with Whitehall

## FUTURE STRUCTURES

### " JOINED-UP" GOVERNMENT

- ▶ The Economic Policy Unit
  - ▶ assisting the FM / DFM in
    - ◆ negotiations with HMT
    - ◆ determining strategic goals \*
    - ◆ arbitrating on competing demands
    - ◆ co-ordinating economic policies
    - ◆ co-ordinating EU policy
    - ◆ overseeing joint financing \*
    - ◆ monitoring legislation

## FUTURE STRUCTURES

### " JOINED-UP" GOVERNMENT

- ▶ The Economic Policy Unit
  - ▶ responsible for
    - ◆ central initiatives
    - ◆ improving management \*
    - ◆ evaluating programme effectiveness \*





